

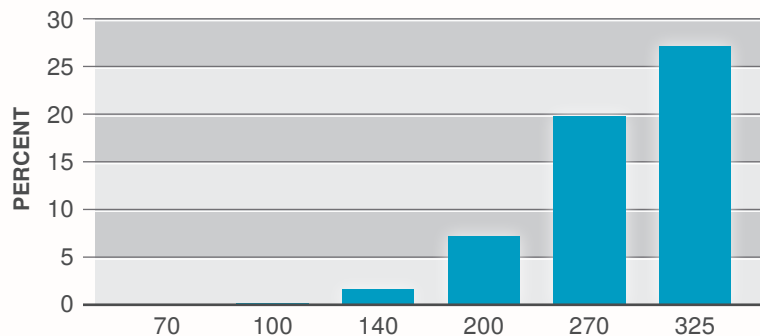


SIL-CO-SIL[®] 106

GROUND SILICA

PLANT: PACIFIC, MISSOURI

TYPICAL VALUES
(% CUM RETENTION)



U.S.A. SIEVE ANALYSIS

USA STD SIEVE SIZE		TYPICAL VALUES		
MESH	MICRONS	% RETAINED		% PASSING
		INDIVIDUAL	CUMULATIVE	CUMULATIVE
70	212	0.0	0.0	100.0
100	150	0.1	0.1	99.9
140	106	1.5	1.6	98.4
200	75	5.6	7.2	92.8
270	53	12.5	19.7	80.3
325	45	7.3	27.0	73.0

TYPICAL PHYSICAL PROPERTIES

Hardness (Mohs)	7
Melting Point (Degrees F)	3100
Mineral	Quartz
pH	7.5
Reflectance (%)	88
Yellowness Index	3.5
Specific Gravity	2.65

TYPICAL CHEMICAL ANALYSIS, %

SiO ₂ (Silicon Dioxide)	99.8
Fe ₂ O ₃ (Iron Oxide)	0.012
Al ₂ O ₃ (Aluminum Oxide)	0.16
TiO ₂ (Titanium Dioxide)	0.01
CaO (Calcium Oxide)	0.02
MgO (Magnesium Oxide)	<0.01
Na ₂ O (Sodium Oxide)	<0.01
K ₂ O (Potassium Oxide)	0.01
LOI (Loss On Ignition)	0.1

July 20, 1999

U.S. Silica Company

8490 Progress Drive, Suite 300
Frederick, MD 21701

(301) 682-0600 (phone)
(800) 243-7500 (toll-free)

ussilica.com

DISCLAIMER: The information set forth in this Product Data Sheet represents typical properties of the product described; the information and the typical values are not specifications. U.S. Silica Company makes no representation or warranty concerning the Products, expressed or implied, by this Product Data Sheet.

WARNING: The product contains crystalline silica – quartz, which can cause silicosis (an occupational lung disease) and lung cancer. For detailed information on the potential health effect of crystalline silica - quartz, see the U.S. Silica Company Material Safety Data Sheet.