

Appendix 11-B

24-HOUR RAINFALL DEPTH DATA FOR VIRGINIA

Table of Contents

TABLES

Table 11-B.1. NRCS Implementation of NOAA's ATLAS 14 Rainfall Data for Virginia	11-B-2
---	--------

FIGURES

Figure 11-B-1. NRCS Rainfall Zone Map for Albermarle County, Virginia	11-B-6
Figure 11-B.2. NRCS Rainfall Zone Map for Augusta County, Virginia	11-B-7
Figure 11-B.3. NRCS Rainfall Zone Map for Bedford County, Virginia	11-B-8
Figure 11-B.4. NRCS Rainfall Zone Map for Carroll County, Virginia	11-B-9
Figure 11-B.5. NRCS Rainfall Zone Map for Floyd County, Virginia	11-B-10
Figure 11-B.6. NRCS Rainfall Zone Map for Giles County, Virginia	11-B-11
Figure 11-B.7. NRCS Rainfall Zone Map for Grayson County, Virginia	11-B-12
Figure 11-B.8. NRCS Rainfall Zone Map for Greene County, Virginia	11-B-13
Figure 11-B.9. NRCS Rainfall Zone Map for Madison County, Virginia	11-B-14
Figure 11-B.10. NRCS Rainfall Zone Map for Montgomery County, Virginia	11-B-15
Figure 11-B.11. NRCS Rainfall Zone Map for Page County, Virginia	11-B-16
Figure 11-B.12. NRCS Rainfall Zone Map for Patrick County, Virginia	11-B-17
Figure 11-B.13. NRCS Rainfall Zone Map for Roanoke County, Virginia	11-B-18
Figure 11-B.14. NRCS Rainfall Zone Map for Rockbridge County, Virginia	11-B-19
Figure 11-B.15. NRCS Rainfall Zone Map for Rockingham County, Virginia	11-B-20
Figure 11-B.16. NRCS Rainfall Zone Map for Scott County, Virginia	11-B-21

Table 11-B.1 provides the 24-hour rainfall depths for Virginia counties and major cities, as updated through summer 2013 by the Virginia office of the USDA-NRCS. For counties having more than one rainfall zone, consult the appropriate map figures following the table for the approximate boundaries of the various zones. For localities not listed, see data for an adjacent locality.

Table 11-B.1. NRCS Implementation of NOAA's ATLAS 14 Rainfall Data for Virginia

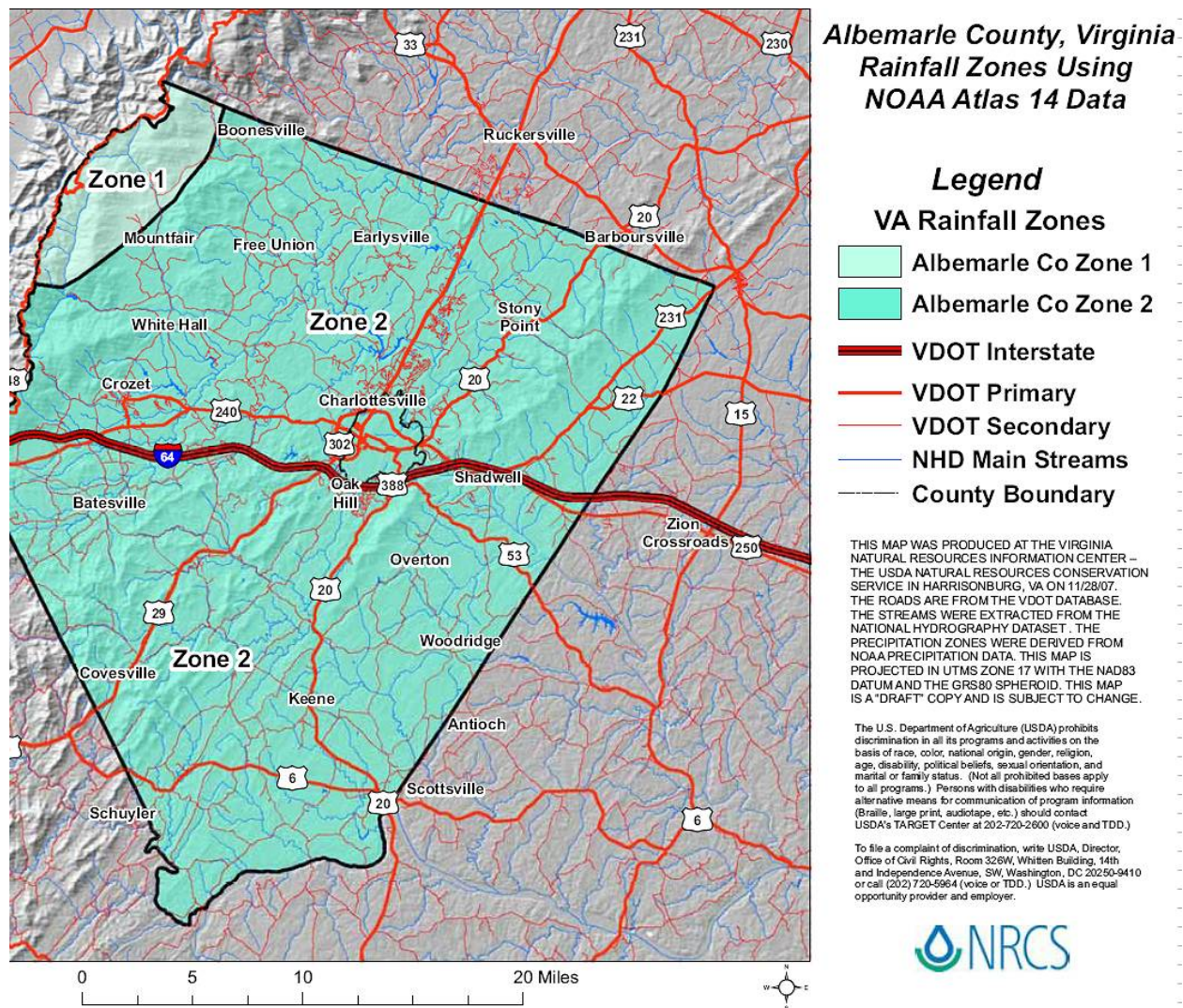
County	Rainfall Type	Storm Return Frequency (Years)						
		1	2	5	10	25	50	100
Accomack	DMV C	2.7	3.3	4.2	5.1	6.4	7.5	8.8
Albermarle (Zone 1)	NOAA D	3.4	4.1	5.2	6.2	7.6	8.7	10.1
Albermarle (Zone 2)	NOAA D	3.0	3.6	4.6	5.5	6.7	7.8	9.0
Alleghany	NOAA C	2.4	2.8	3.6	4.2	5.0	5.8	6.5
Amelia	NOAA C	2.7	3.3	4.2	5.0	6.1	7.1	8.2
Amherst	NOAA C	2.8	3.4	4.4	5.1	6.3	7.2	8.3
Appomattox	NOAA C	2.8	3.4	4.4	5.2	6.4	7.4	8.5
Augusta (Zone 1)	NOAA C	2.4	3.0	3.7	4.4	5.3	6.1	6.9
Augusta (Zone 2)	NOAA D	2.8	3.4	4.3	5.1	6.2	7.1	8.1
Bath	NOAA C	2.5	3.0	3.7	4.4	5.3	6.0	6.8
Bedford (Zone 1)	NOAA D	3.1	3.8	4.8	5.7	7.0	8.1	9.3
Bedford (Zone 2)	NOAA C	2.8	3.3	4.3	5.0	6.2	7.1	8.2
Bland	NOAA A	2.2	2.6	3.2	3.6	4.2	4.7	5.2
Botetourt	NOAA C	2.6	3.2	4.1	4.8	5.8	6.7	7.6
Brunswick	NOAA C	2.8	3.4	4.4	5.2	6.3	7.3	8.3
Buchanan	NOAA A	2.2	2.6	3.2	3.7	4.3	4.9	5.5
Buckingham	NOAA C	2.8	3.4	4.3	5.1	6.3	7.3	8.3
Campbell	NOAA C	2.7	3.3	4.3	5.0	6.2	7.2	8.25
Caroline	NOAA C	2.7	3.3	4.2	5.0	6.3	7.3	8.6
Carroll (Zone 1)	NOAA B	2.3	2.7	3.4	4.0	4.8	5.5	6.1
Carroll (Zone 2)	NOAA C	2.6	3.2	4.0	4.7	5.6	6.4	7.2
Carroll (Zone 3)	NOAA C	3.0	3.6	4.6	5.3	6.5	7.5	8.5
Carroll (Zone 4)	NOAA D	3.4	4.1	5.2	6.1	7.5	8.6	9.9
Charles City	NOAA C	2.8	3.4	4.4	5.2	6.5	7.6	8.8
Charlotte	NOAA C	2.7	3.3	4.2	5.0	6.1	7.1	8.1
Chesapeake (city)	NOAA B	3.0	3.7	4.8	5.7	7.0	8.2	9.4
Chesterfield	NOAA C	2.8	3.4	4.3	5.1	6.3	7.3	8.4
Clarke	NOAA B	2.4	2.9	3.6	4.3	5.2	5.9	6.8
Craig	NOAA C	2.4	2.9	3.6	4.2	5.1	5.9	6.6
Culpeper	NOAA C	2.7	3.3	4.2	5.0	6.2	7.2	8.1
Cumberland	NOAA C	2.7	3.3	4.2	5.0	6.1	7.07	8.14
Dickenson	NOAA A	2.2	2.6	3.2	3.7	4.4	5.0	5.7
Dinwiddie	NOAA C	2.8	3.4	4.4	5.2	6.3	7.3	8.4
Essex	NOAA C	2.7	3.2	4.2	5.0	6.3	7.4	8.6

County	Rainfall Type	Storm Return Frequency (Years)						
		1	2	5	10	25	50	100
Fairfax	NOAA C	2.6	3.1	4.0	4.8	6.0	7.0	8.2
Fauquier	NOAA B	2.6	3.2	4.0	4.8	5.9	6.9	8.0
Floyd (Zone 1)	NOAA C	2.5	3.1	3.9	4.6	5.6	6.4	7.3
Floyd (Zone 2)	NOAA C	2.9	3.5	4.4	5.2	6.4	7.4	8.4
Floyd (Zone 3)	NOAA D	3.4	4.1	5.3	6.2	7.6	8.8	10.2
Floyd (Zone 4)	NOAA D	3.8	4.6	5.9	7.0	8.6	10.0	11.5
Fluvanna	NOAA C	2.7	3.3	4.2	4.9	6.0	7.0	8.1
Franklin	NOAA C	2.8	3.4	4.4	5.2	6.32	7.31	8.39
Frederick	NOAA B	2.4	2.8	3.5	4.1	5.0	5.7	6.5
Giles (Zone 1)	NOAA A	2.1	2.5	3.1	3.6	4.3	4.9	5.5
Giles (Zone 2)	NOAA B	2.3	2.8	3.5	4.1	4.9	5.6	6.4
Gloucester	NOAA C	2.9	3.5	4.5	5.4	6.7	7.9	9.2
Goochland	NOAA C	2.7	3.3	4.2	5.0	6.1	7.1	8.2
Grayson (Zone 1)	NOAA C	3.3	3.9	4.9	5.7	6.8	7.7	8.7
Grayson (Zone 2)	NOAA B	2.4	2.9	3.6	4.1	4.9	5.6	6.2
Grayson (Zone 3)	NOAA C	2.7	3.2	4.1	4.7	5.7	6.5	7.3
Greene	NOAA D	3.0	3.7	4.7	5.5	6.7	7.8	8.9
Greensville	NOAA B	2.7	3.3	4.2	5.0	6.2	7.2	8.3
Halifax	NOAA B	2.7	3.3	4.1	4.9	6.0	6.9	7.9
Hampton (city)	NOAA C	2.9	3.6	4.6	5.5	6.9	8.1	9.3
Hanover	NOAA C	2.7	3.3	4.2	5.0	6.2	7.3	8.4
Henrico	NOAA C	2.7	3.3	4.3	5.1	6.3	7.3	8.4
Henry	NOAA C	2.9	3.5	4.5	5.3	6.5	7.5	8.7
Highland	NOAA C	2.4	2.9	3.6	4.2	5.0	5.7	6.4
Isle of Wight	NOAA B	3.0	3.6	4.7	5.5	6.8	8.0	9.2
James City	NOAA C	2.9	3.5	4.6	5.5	6.8	7.9	9.2
King and Queen	NOAA C	2.7	3.3	4.3	5.1	6.4	7.5	8.7
King George	NOAA C	2.6	3.2	4.1	5.0	6.2	7.3	8.5
King William	NOAA C	2.7	3.3	4.2	5.1	6.3	7.4	8.6
Lancaster	NOAA C	2.7	3.3	4.3	5.2	6.5	7.6	8.9
Lee	NOAA B	2.5	3.0	3.7	4.2	5.0	5.7	6.3
Loudoun	NOAA B	2.6	3.1	4.0	4.7	5.7	6.7	7.7
Louisa	NOAA C	2.7	3.3	4.2	5.0	6.2	7.2	8.3
Lunenburg	NOAA C	2.7	3.3	4.2	5.0	6.1	7.1	8.2
Lynchburg (city)	NOAA C	2.8	3.3	4.3	5.0	6.2	7.2	8.2
Madison (Zone 1)	NOAA D	3.4	4.1	5.2	6.1	7.5	8.7	9.9
Madison (Zone 2)	NOAA C	2.9	3.5	4.4	5.3	6.5	7.5	8.6
Mathews	NOAA C	2.8	3.4	4.5	5.4	6.7	7.9	9.2
Mecklenburg	NOAA B	2.7	3.2	4.1	4.9	5.9	6.8	7.8
Middlesex	NOAA C	2.8	3.4	4.4	5.3	6.6	7.7	9.0
Montgomery (Zone 1)	NOAA B	2.0	2.4	3.1	3.6	4.3	5.0	5.6

County	Rainfall Type	Storm Return Frequency (Years)						
		1	2	5	10	25	50	100
Montgomery (Zone 2)	NOAA B	2.3	2.7	3.5	4.1	5.0	5.7	6.5
Montgomery (Zone 3)	NOAA C	2.6	3.2	4.0	4.7	5.8	6.6	7.6
Nelson	NOAA D	3.0	3.6	4.6	5.5	6.7	7.7	8.8
New Kent	NOAA C	2.8	3.4	4.4	5.2	6.4	7.5	8.7
Newport News (city)	NOAA C	2.9	3.6	4.6	5.5	6.9	8.0	9.3
Norfolk (city)	NOAA C	2.9	3.6	4.6	5.5	6.8	8.0	9.2
Northampton	DMV C	2.7	3.3	4.3	5.2	6.48	7.61	8.88
Northumberland	NOAA C	2.7	3.3	4.3	5.1	6.4	7.5	8.8
Nottoway	NOAA C	2.7	3.3	4.2	5.0	6.2	7.1	8.2
Orange	NOAA C	2.8	3.3	4.3	5.1	6.3	7.3	8.5
Page (Zone 1)	NOAA C	2.4	2.9	3.7	4.4	5.3	6.1	6.9
Page (Zone 2)	NOAA D	3.0	3.6	4.6	5.4	6.6	7.6	8.7
Patrick (Zone 1)	NOAA D	3.8	4.6	5.9	7.0	8.6	9.9	11.5
Patrick (Zone 2)	NOAA D	3.3	4.0	5.2	6.1	7.5	8.7	10.0
Patrick (Zone 3)	NOAA C	3.0	3.7	4.7	5.6	6.8	7.9	9.1
Petersburg (city)	NOAA C	2.8	3.4	4.4	5.2	6.3	7.4	8.5
Pittsylvania	NOAA C	2.8	3.4	4.3	5.1	6.2	7.2	8.2
Poquoson (city)	NOAA C	2.9	3.6	4.6	5.5	6.9	8.0	9.4
Portsmouth (city)	NOAA C	3.0	3.6	4.7	5.6	6.9	8.0	9.3
Powhatan	NOAA C	2.7	3.3	4.2	5.0	6.1	7.1	8.2
Prince Edward	NOAA C	2.7	3.3	4.3	5.0	6.2	7.2	8.3
Prince George	NOAA C	2.8	3.4	4.4	5.2	6.4	7.5	8.6
Prince William	NOAA C	2.5	3.0	3.9	4.7	5.8	6.9	8.0
Pulaski	NOAA A	2.0	2.4	3.1	3.6	4.3	5.0	5.6
Rappahannock	NOAA C	2.8	3.4	4.3	5.0	6.2	7.1	8.2
Richmond (city)	NOAA C	2.8	3.4	4.3	5.1	6.3	7.3	8.4
Richmond	NOAA C	2.7	3.3	4.3	5.1	6.4	7.5	8.8
Roanoke (Zone 1)	NOAA C	2.4	2.9	3.6	4.2	5.2	5.9	6.7
Roanoke (Zone 2)	NOAA C	2.6	3.2	4.0	4.7	5.7	6.6	7.5
Rockbridge	NOAA C	2.5	3.0	3.9	4.5	5.5	6.3	7.2
Rockingham (Zone 1)	NOAA B	2.3	2.8	3.5	4.1	4.9	5.6	6.4
Rockingham (Zone 2)	NOAA D	2.9	3.4	4.4	5.1	6.2	7.1	8.1
Russell	NOAA A	2.2	2.6	3.2	3.6	4.3	4.8	5.4
Scott (Zone 1)	NOAA A	2.4	2.8	3.4	3.9	4.6	5.2	5.8
Scott (Zone 2)	NOAA A	2.3	2.7	3.2	3.6	4.2	4.6	5.0
Shenandoah	NOAA B	2.3	2.8	3.5	4.1	5.0	5.7	6.5
Smyth	NOAA A	2.3	2.7	3.2	3.7	4.2	4.7	5.1
Southampton	NOAA B	2.9	3.5	4.5	5.4	6.6	7.7	8.8
Spotsylvania	NOAA C	2.7	3.2	4.2	4.9	6.1	7.2	8.4
Stafford	NOAA C	2.6	3.1	4.0	4.8	6.0	7.0	8.2
Suffolk (city)	NOAA B	3.0	3.6	4.7	5.6	6.9	8.0	9.3

County	Rainfall Type	Storm Return Frequency (Years)						
		1	2	5	10	25	50	100
Surry	NOAA C	2.9	3.5	4.6	5.4	6.7	7.8	9.0
Sussex	NOAA C	2.9	3.5	4.5	5.3	6.5	7.5	8.6
Tazewell	NOAA A	2.1	2.5	3.0	3.5	4.1	4.6	5.1
Virginia Beach (city)	NOAA C	3.0	3.7	4.7	5.7	7.0	8.2	9.4
Warren (Zone 1)	NOAA B	2.5	3.0	3.8	4.4	5.4	6.2	7.1
Warren (Zone 2)	NOAA C	2.8	3.4	4.3	5.1	6.2	7.2	8.3
Washington	NOAA A	2.2	2.6	3.1	3.5	4.0	4.4	4.8
Westmoreland	NOAA C	2.7	3.2	4.2	5.0	6.3	7.4	8.7
Wise	NOAA A	2.3	2.7	3.3	3.8	4.6	5.2	5.9
Wythe	NOAA A	2.1	2.5	3.1	3.6	4.2	4.7	5.3
York	NOAA C	2.9	3.6	4.6	5.5	6.8	8.0	9.3

Source: USDA-NRCS State Office, Richmond, VA



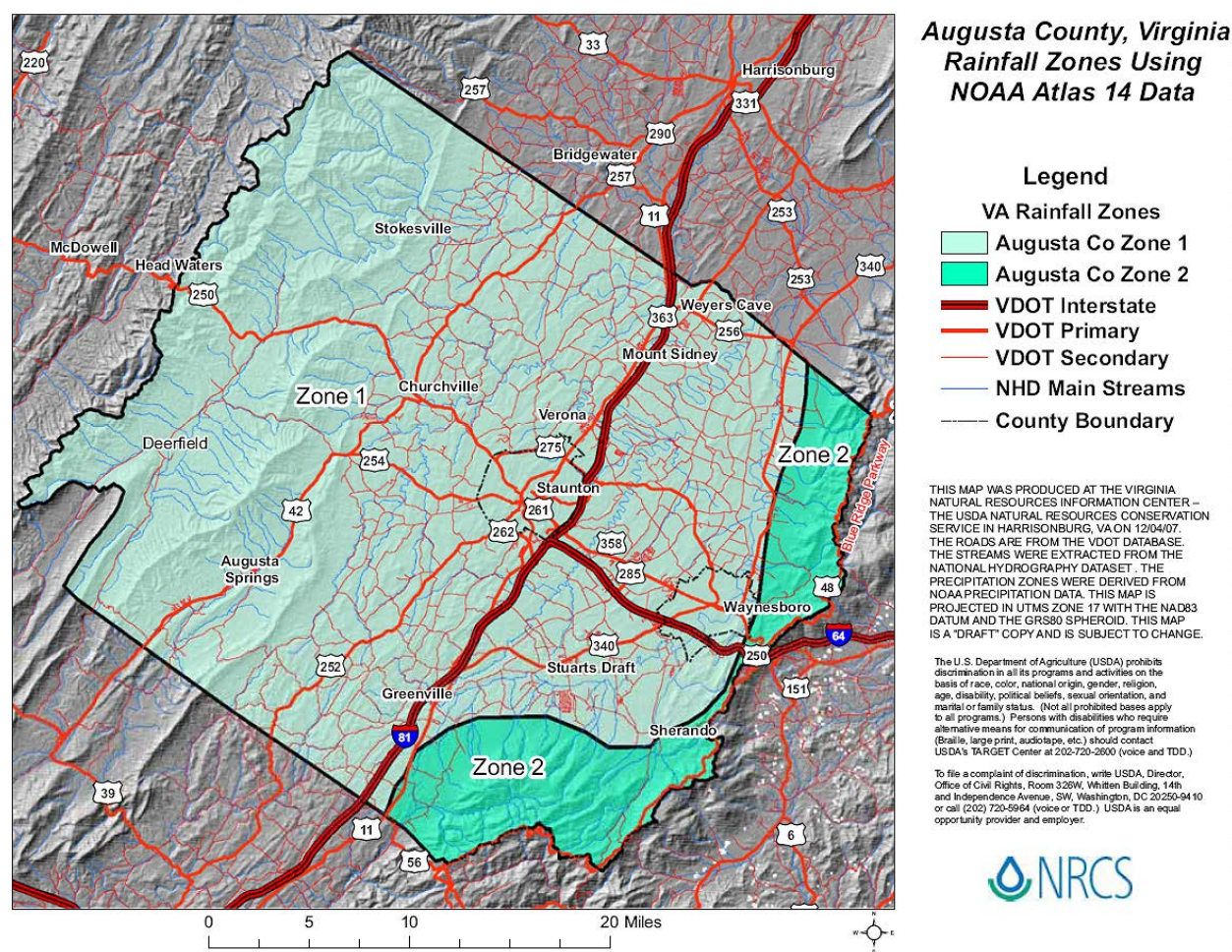


Figure 11-B.2. NRCS Rainfall Zone Map for Augusta County, Virginia

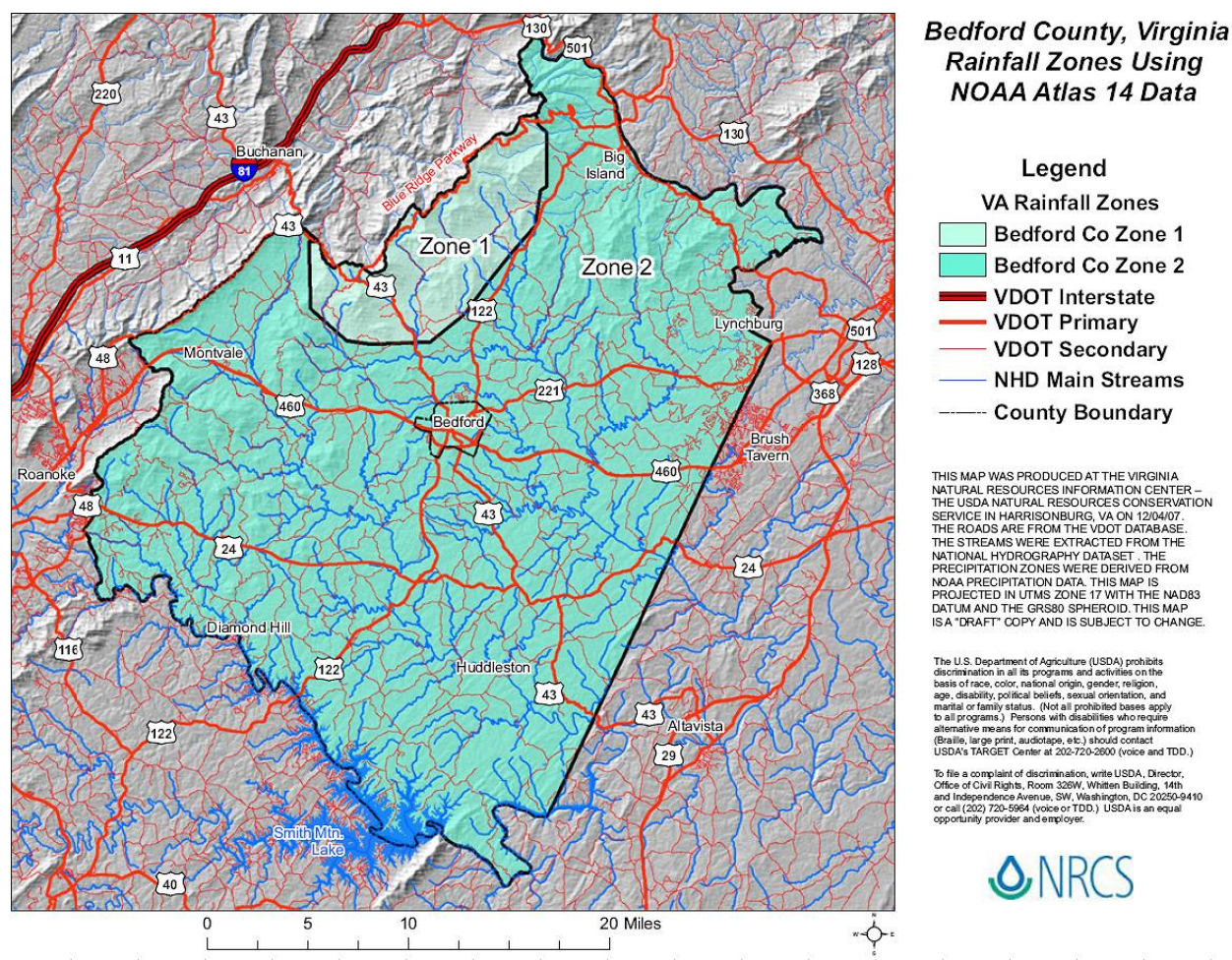


Figure 11-B.3. NRCS Rainfall Zone Map for Bedford County, Virginia

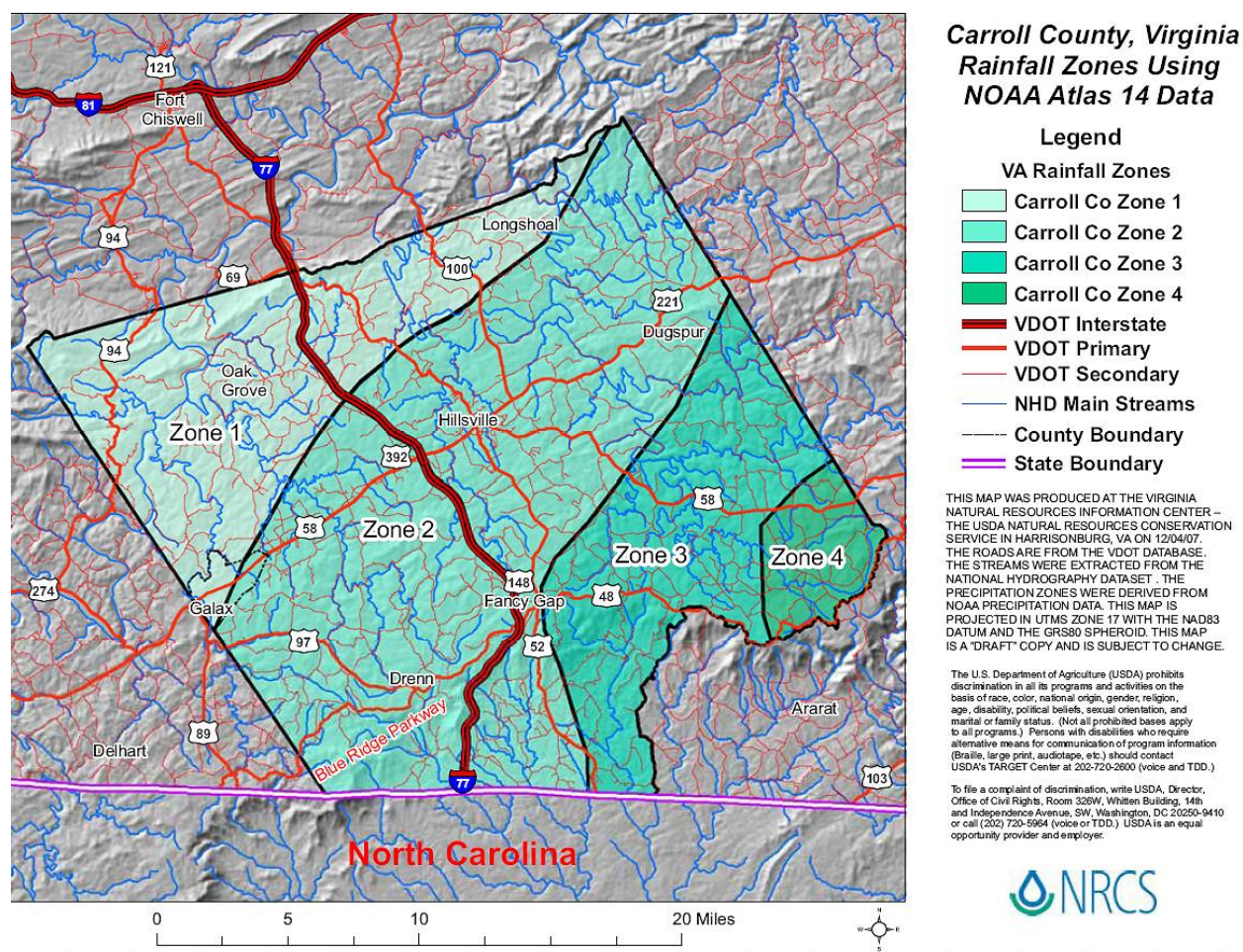


Figure 11-B.4. NRCS Rainfall Zone Map for Carroll County, Virginia

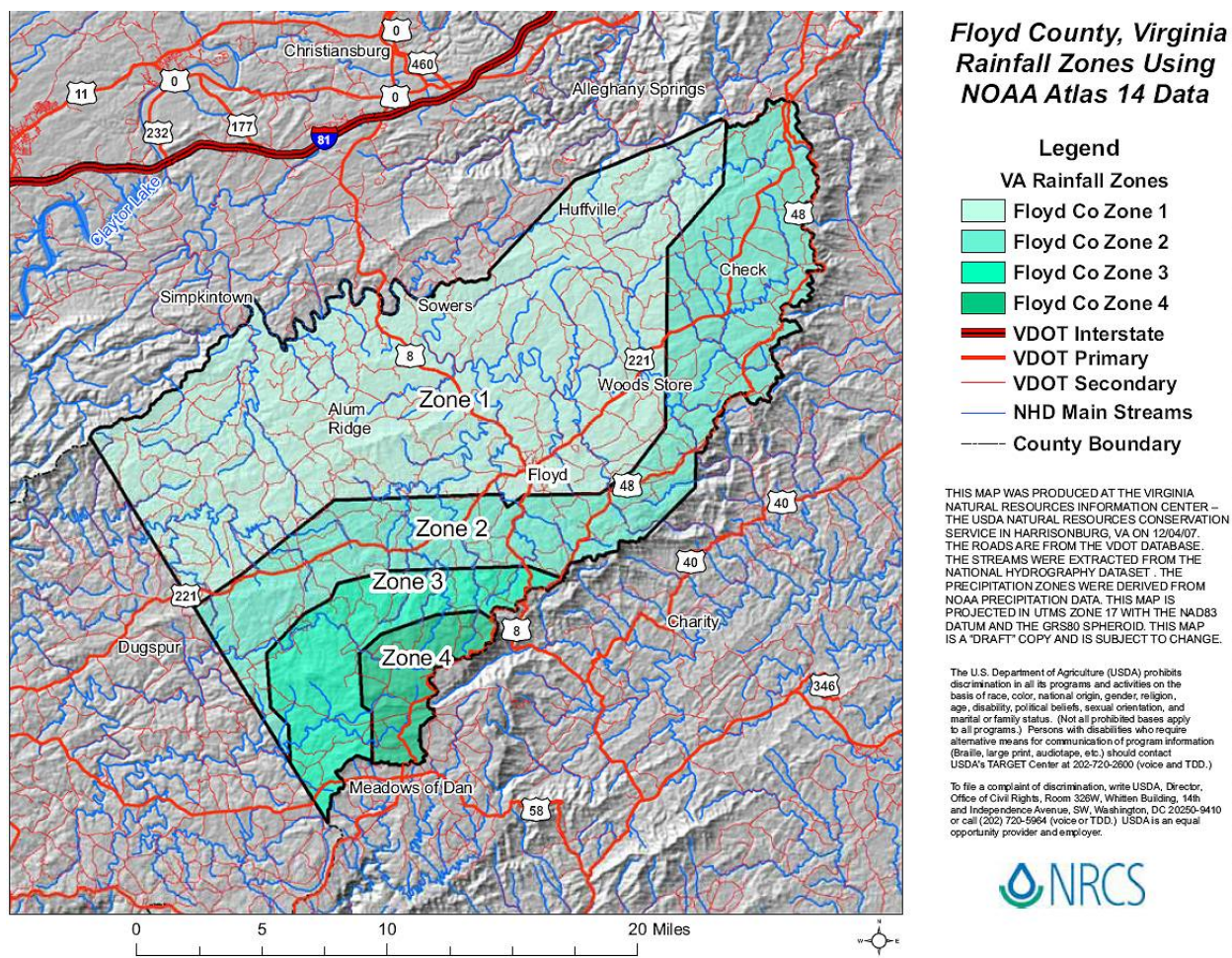


Figure 11-B.5. NRCS Rainfall Zone Map for Floyd County, Virginia

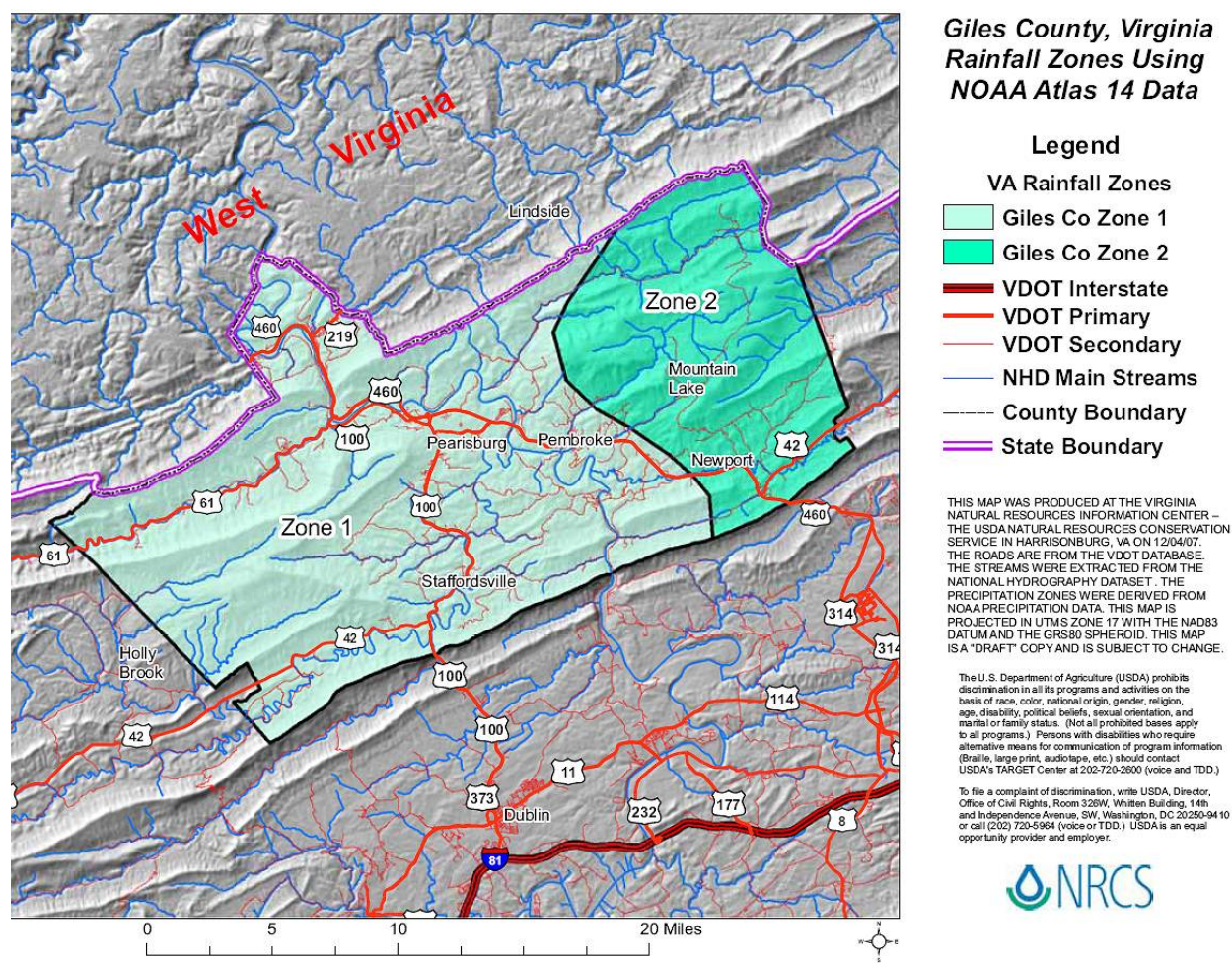


Figure 11-B.6. NRCS Rainfall Zone Map for Giles County, Virginia

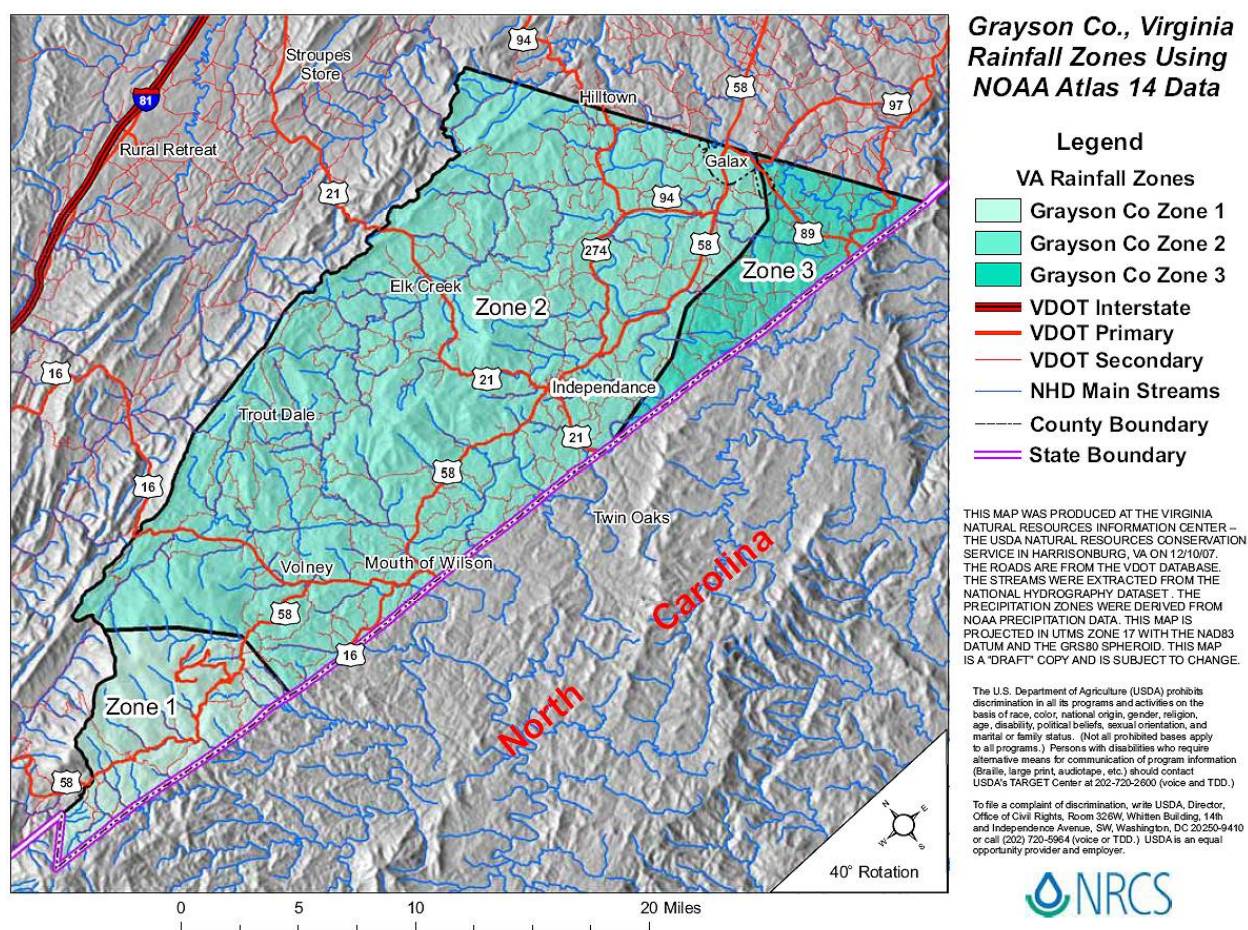


Figure 11-B.7. NRCS Rainfall Zone Map for Grayson County, Virginia

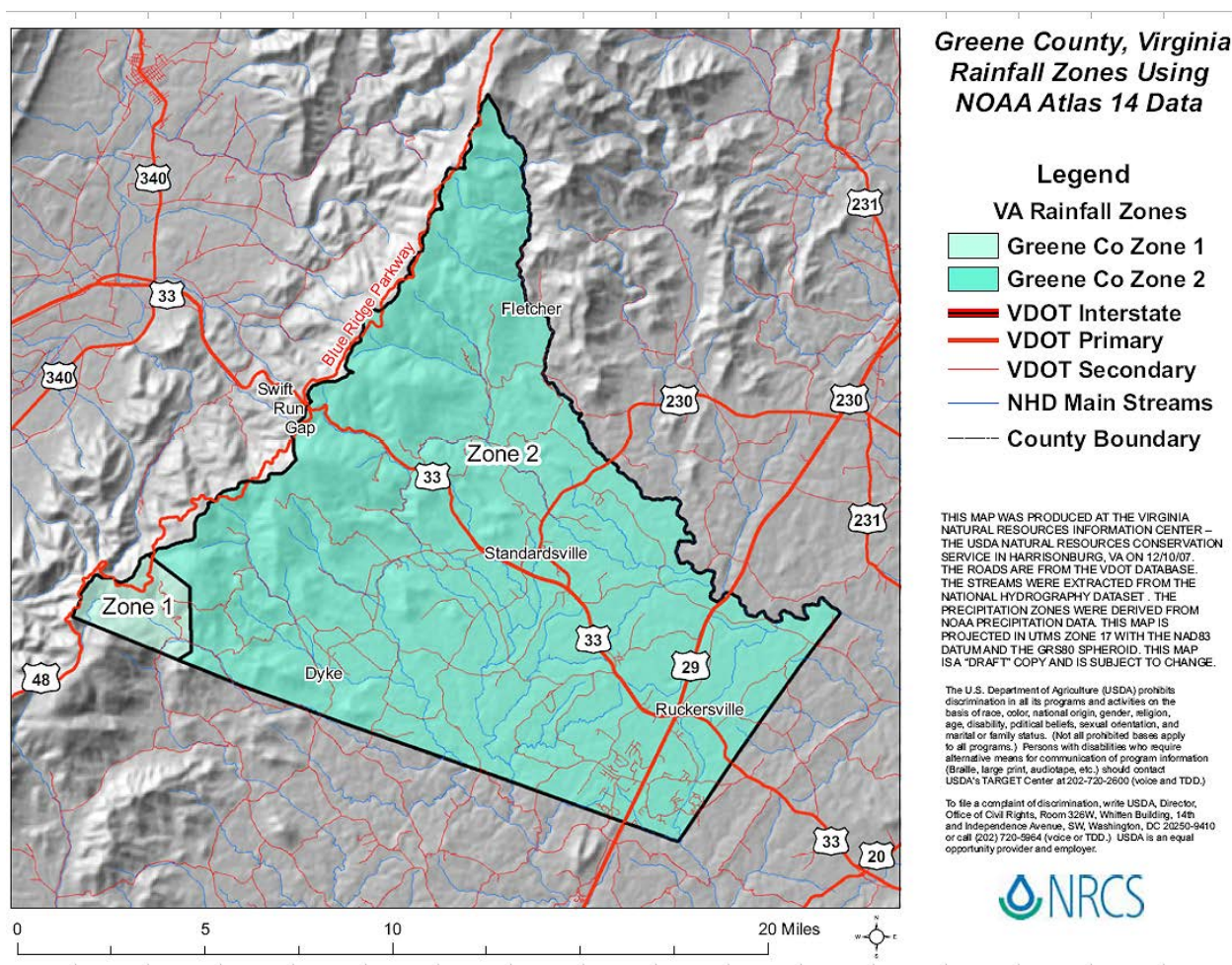


Figure 11-B.8. NRCS Rainfall Zone Map for Greene County, Virginia

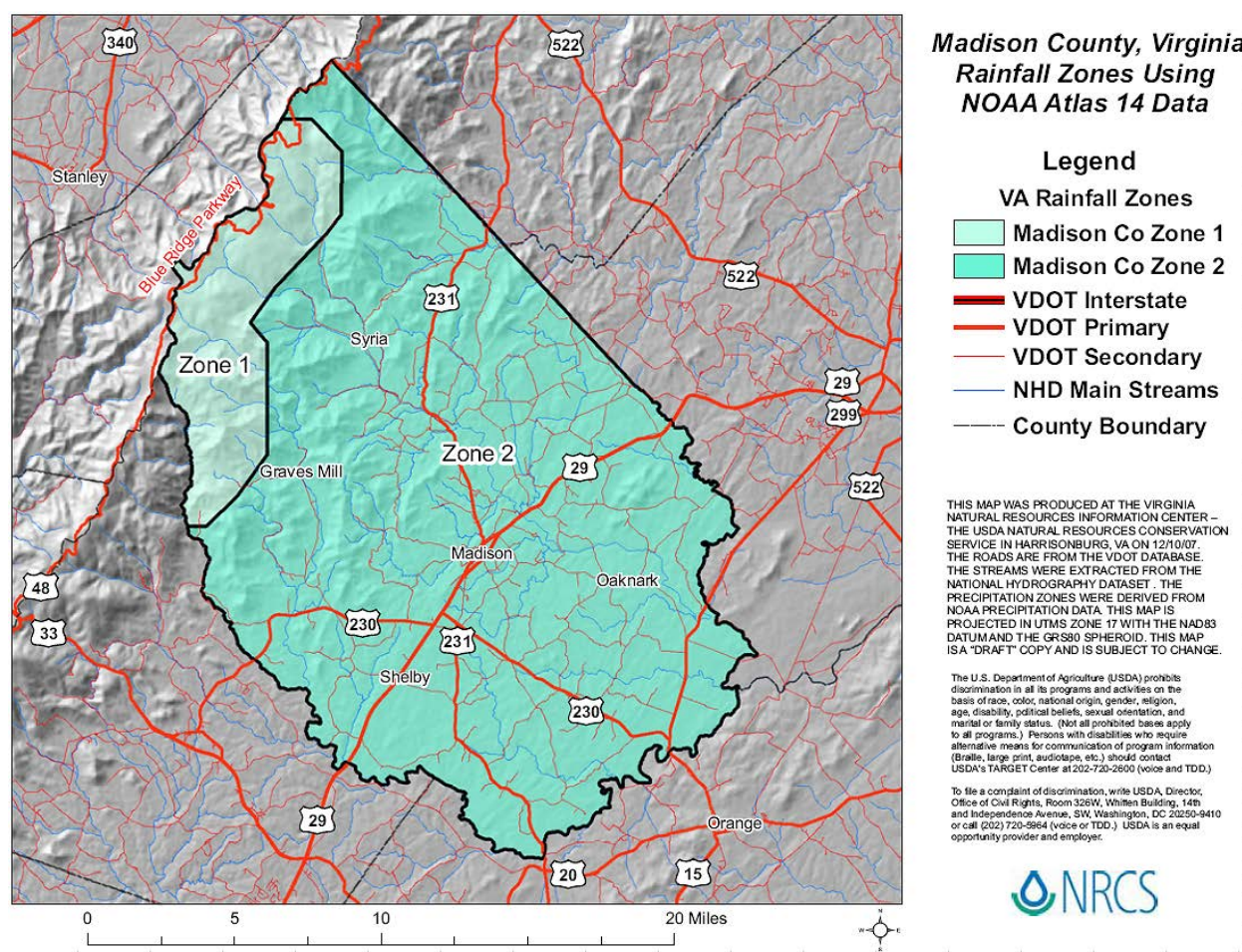


Figure 11-B.9. NRCS Rainfall Zone Map for Madison County, Virginia

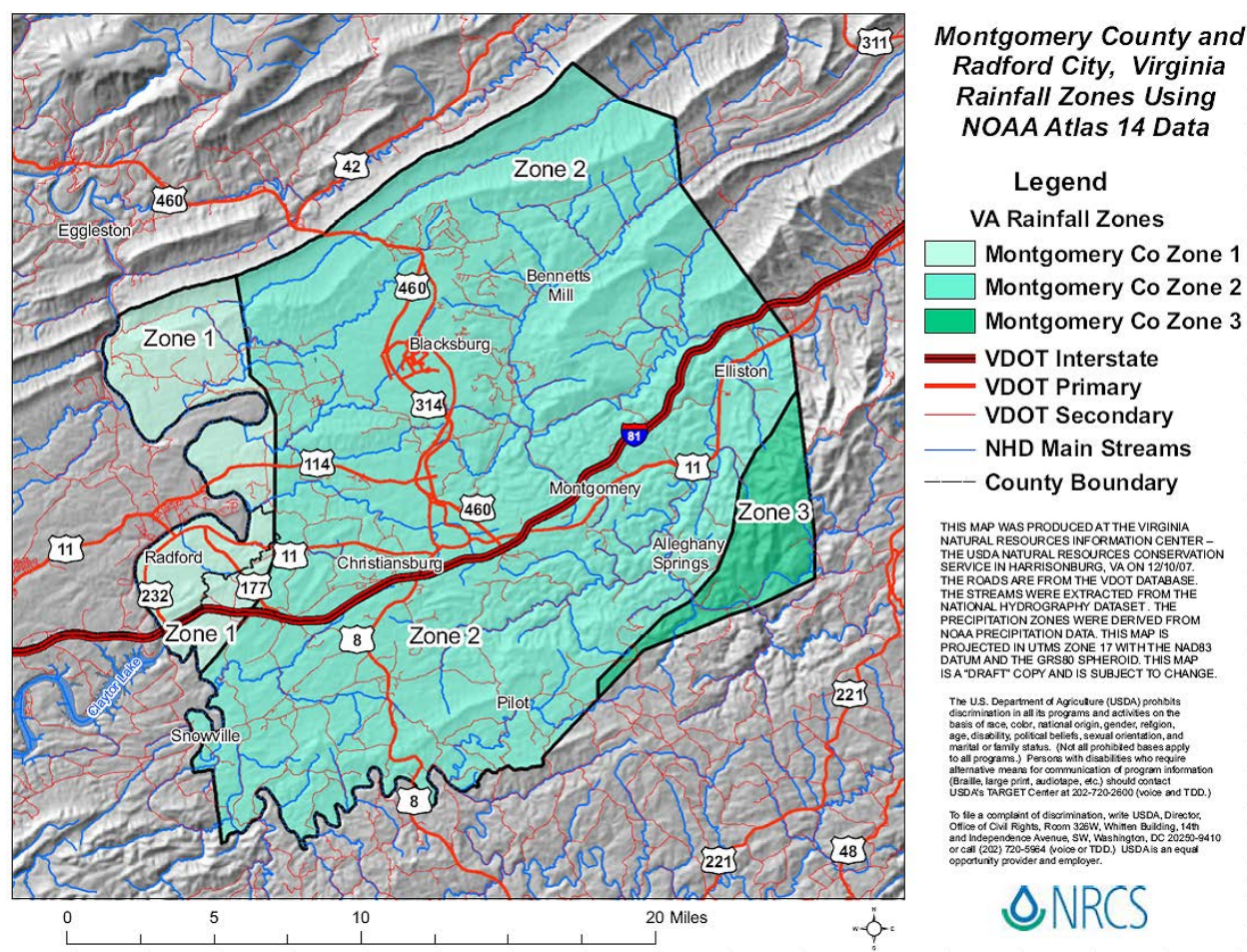


Figure 11-B.10. NRCS Rainfall Zone Map for Montgomery County, Virginia

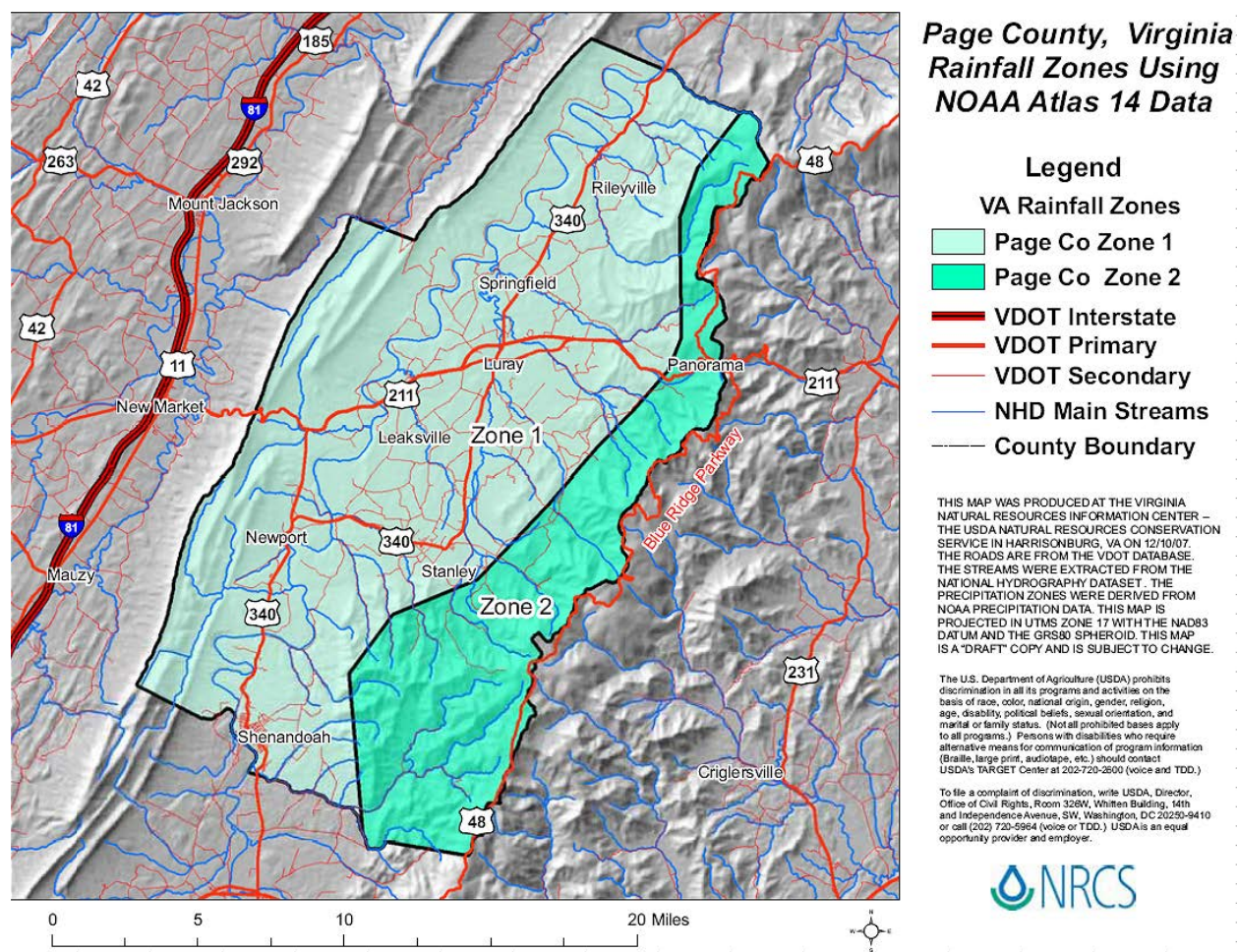


Figure 11-B.11. NRCS Rainfall Zone Map for Page County, Virginia

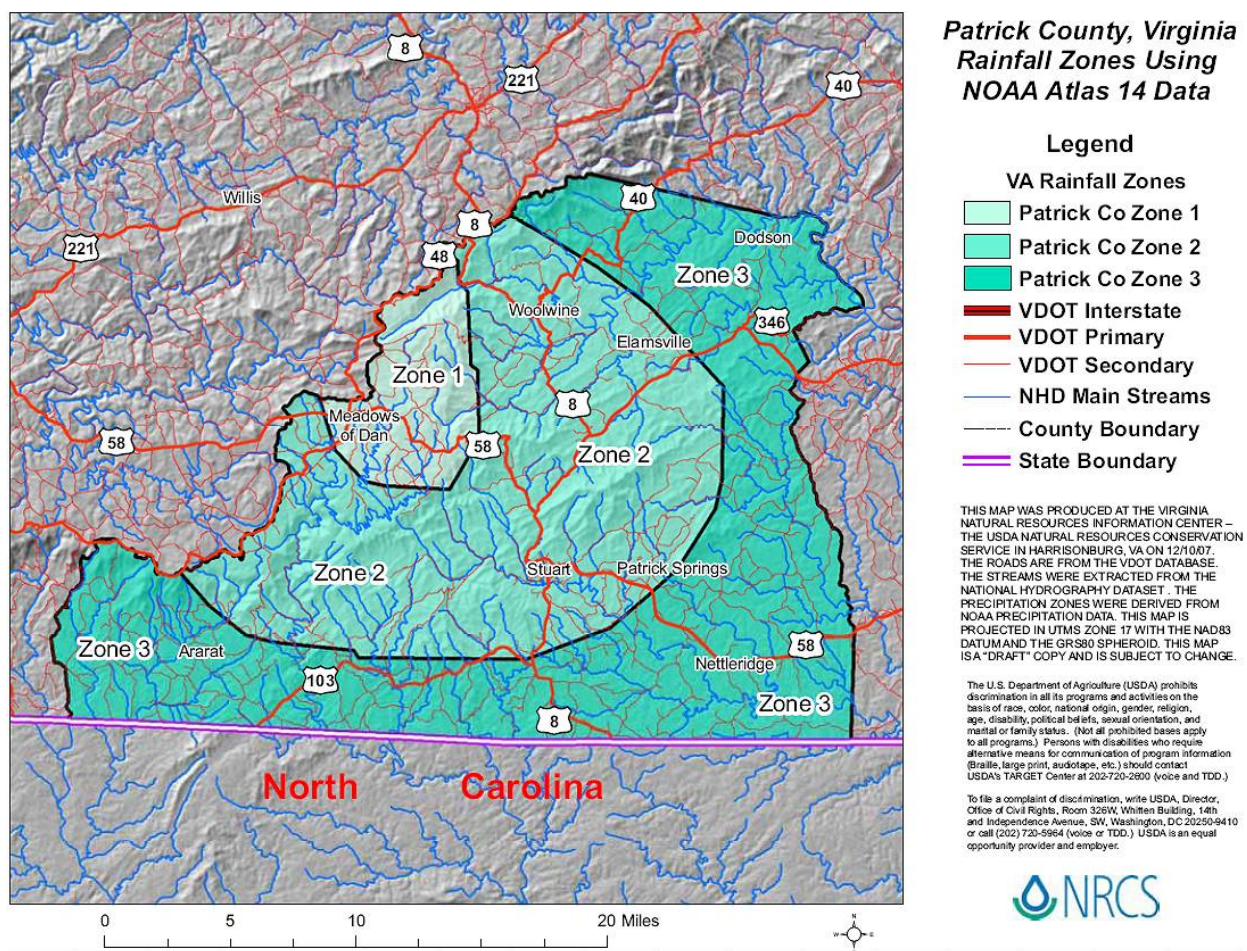


Figure 11-B.12. NRCS Rainfall Zone Map for Patrick County, Virginia

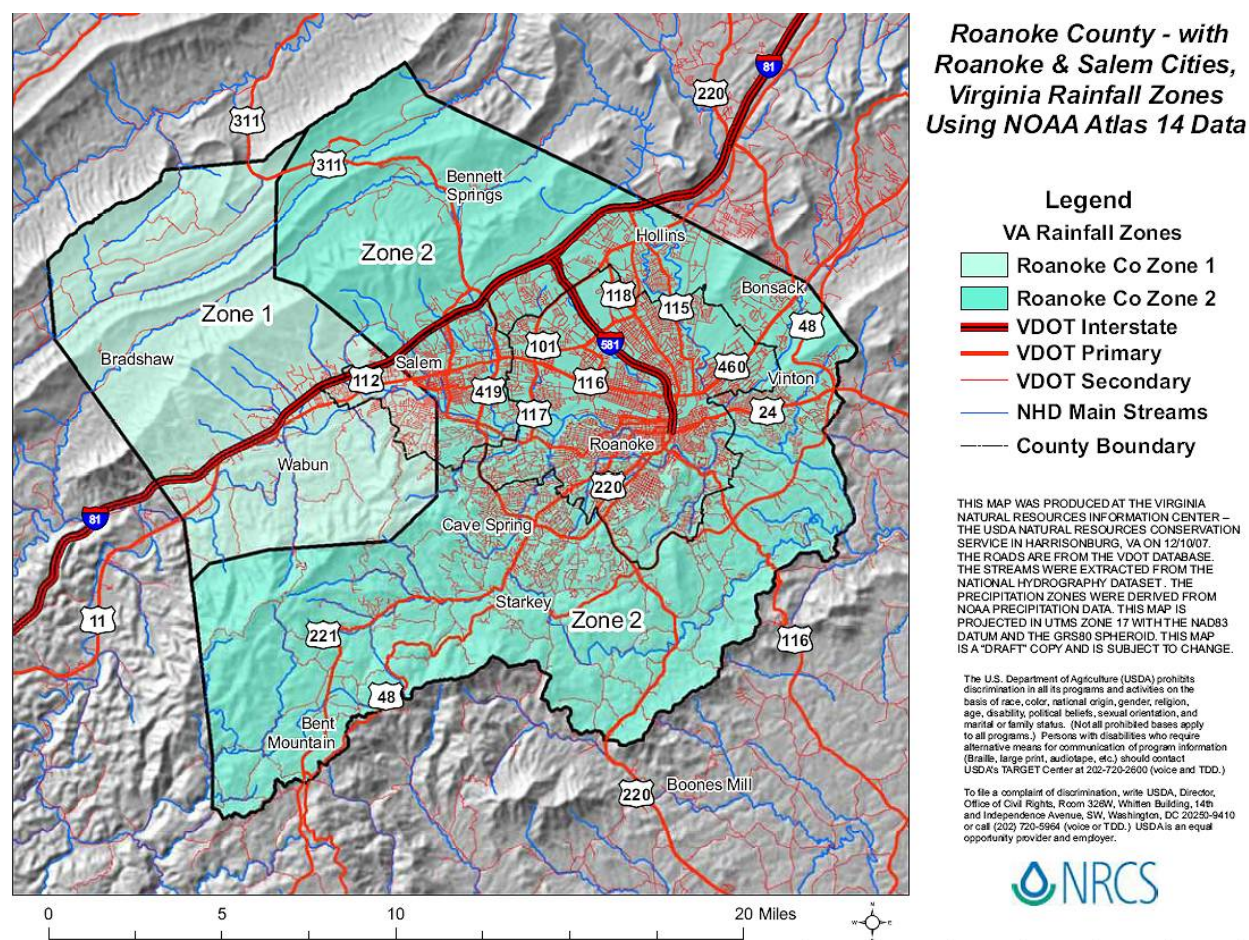


Figure 11-B.13. NRCS Rainfall Zone Map for Roanoke County, Virginia

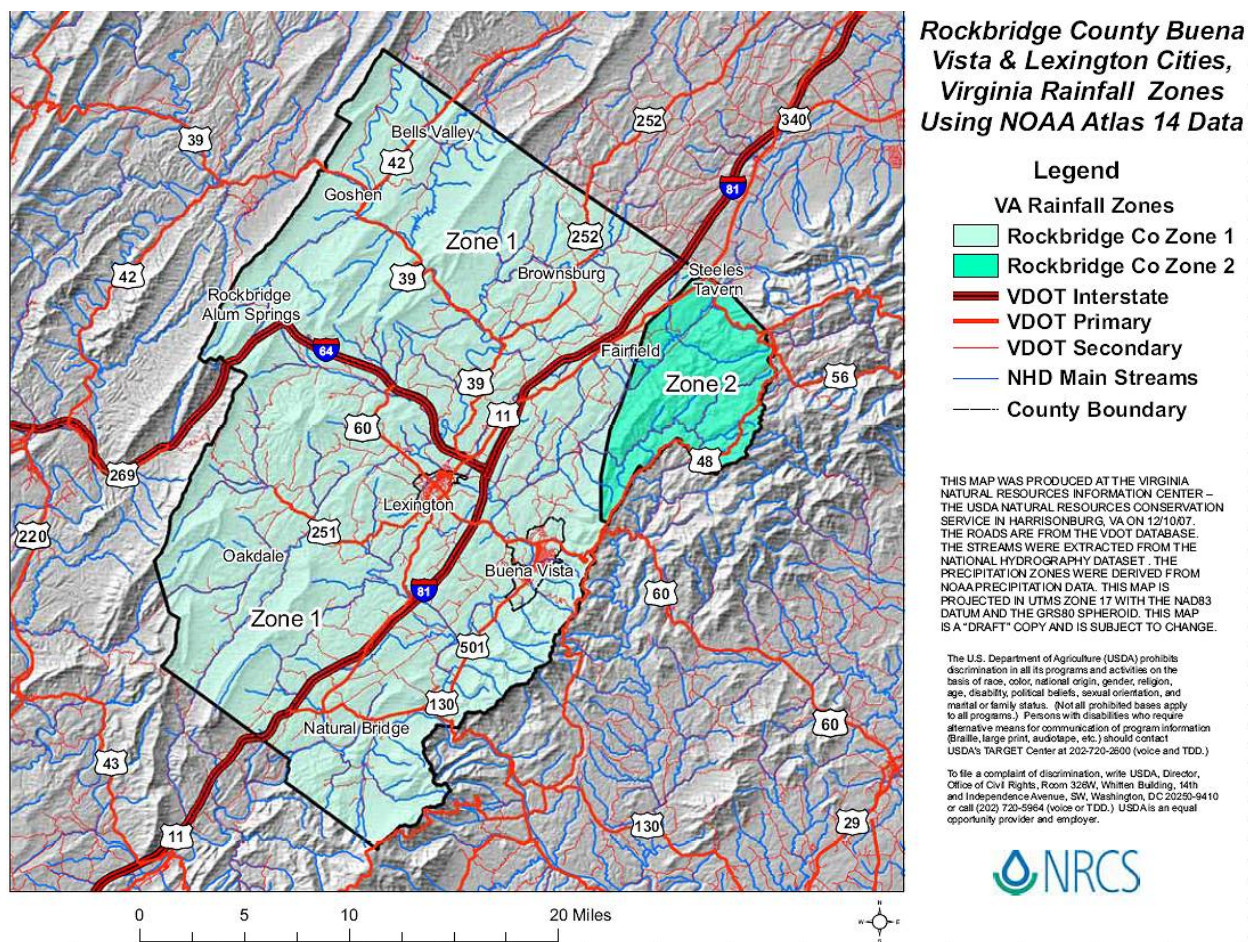


Figure 11-B.14. NRCS Rainfall Zone Map for Rockbridge County, Virginia

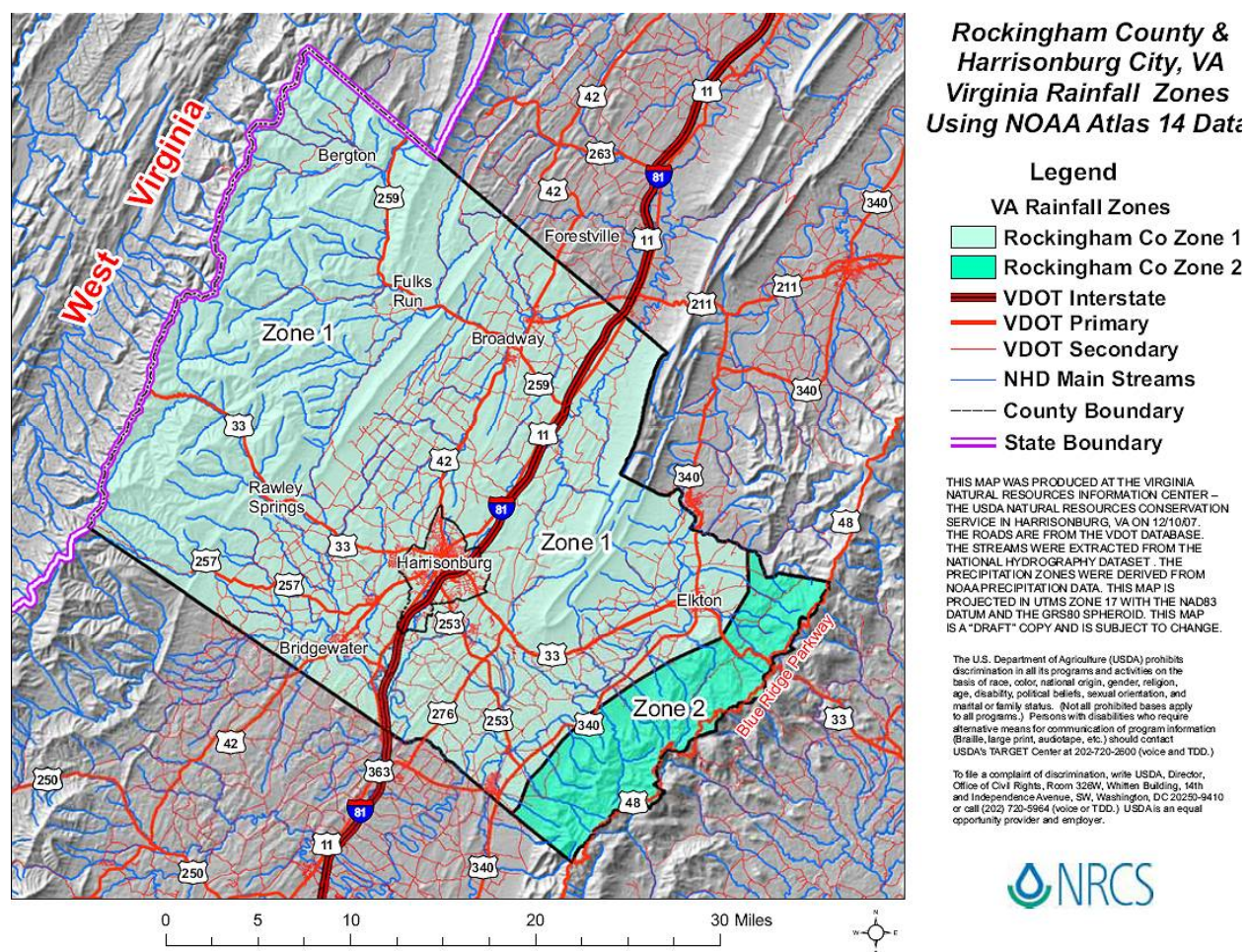


Figure 11-B.15. NRCS Rainfall Zone Map for Rockingham County, Virginia

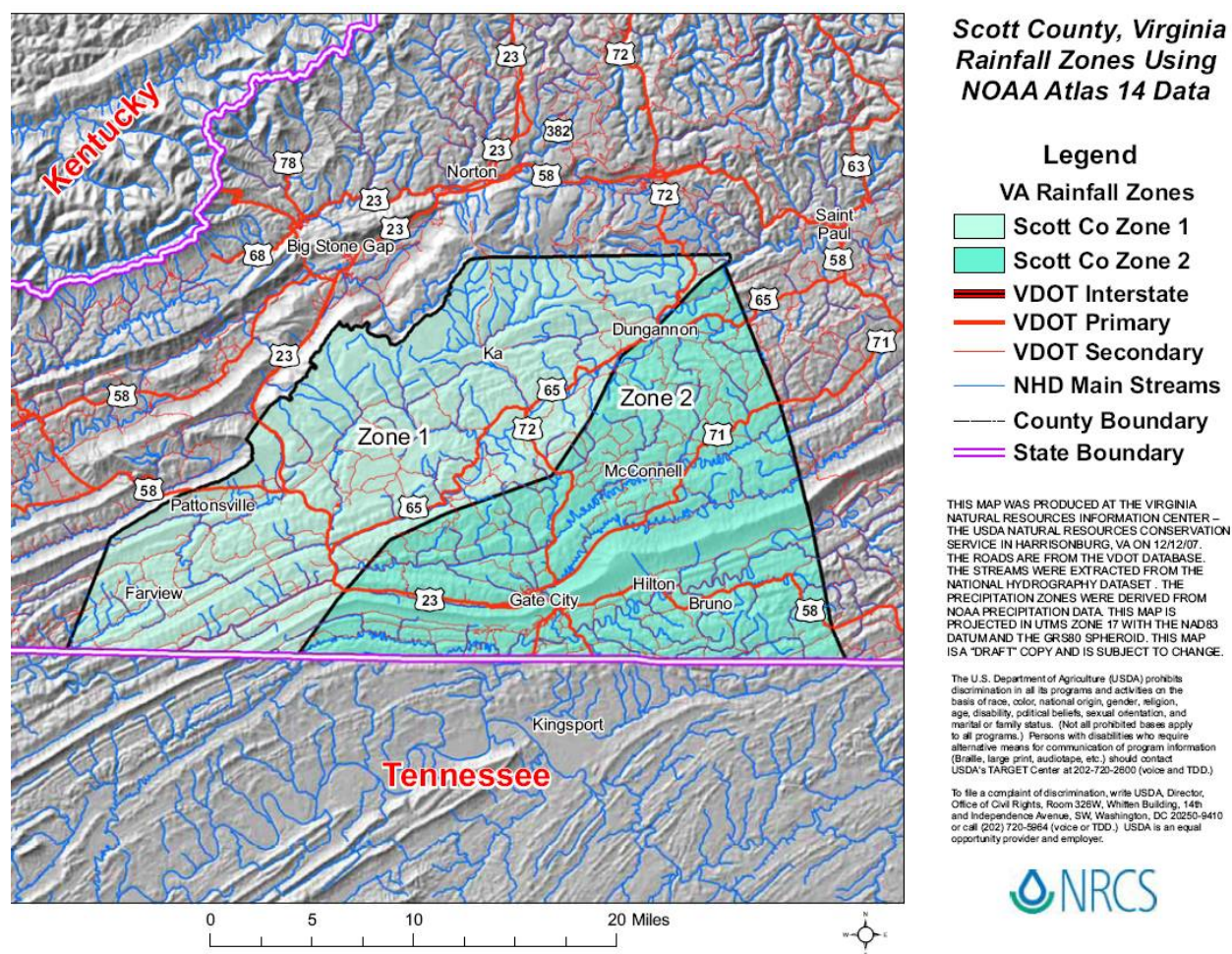


Figure 11-B.16. NRCS Rainfall Zone Map for Scott County, Virginia